

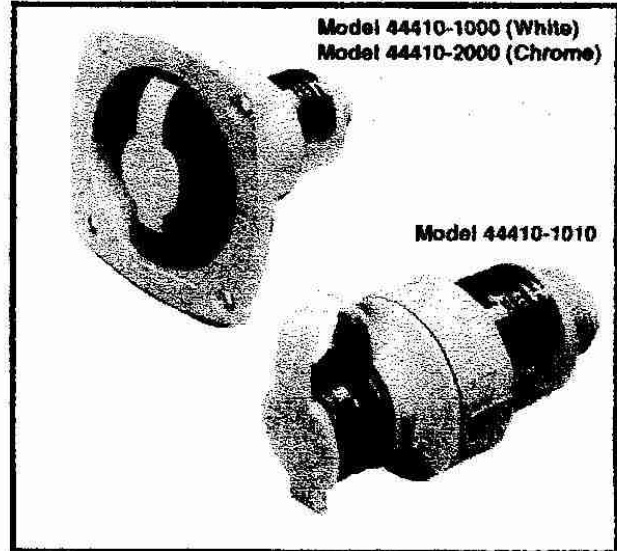


**Models 44410-1000
44410-2000
44410-1010**

WATER PRESSURE REGULATORS

FEATURES

- Reduces unregulated city water pressures that can run as high as 100 psi down to a safe 35 psi – automatically.
- Features built-in backflow preventer. Complies with Federal and State requirements on campers with water service hookup.
- Built-in port strainer is easily cleanable.
- Solid brass hose connection.



Models 44410-1000, 44410-2000, 44410-1010

APPLICATIONS

Most boat or RV water systems can't take the unregulated high pressures found in most campgrounds or marine hookups. Hoses slip off connections; seals and fittings leak. That's why you need a Jabsco City Water Regulator – to keep pressure down to a safe 35 psi. It's inexpensive protection against expensive high pressure pump damage.

The Jabsco Regulator also prevents backflow (as required by State and Federal regulations) and it keeps grit out of your water with an easy-to-clean stainless steel strainer.

Models 44410-1000, -2000 are permanently installed flush mount wall models that double as city water entries. Model 44410-1010 is a portable in-line version with male and female garden hose connections that simply threads between your existing water entry and garden hose hookup.

Both models are made of tough F.D.A. listed plastics, safe for drinking water. And, when used properly, both are inexpensive insurance against high pressure damage.

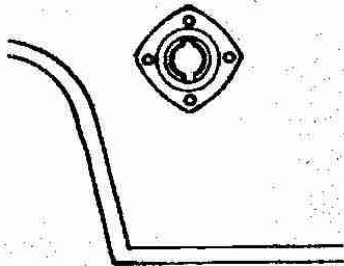
SPECIFICATIONS

- Maximum Inlet Pressure:** 100 psi
Discharge Pressure: 35 psi (approx.)
Inlet Connection: 3/4" Brass Female Garden Hose Fitting
Discharge Connection: 1/2" NPT – Flush mount models
 3/4" Male Garden Hose Connection – inline model
Materials: Acetal Copolymer and A.B.S. Plastics, Brass Connector

MODEL	TYPE	INTAKE PORT	DISCHARGE PORT	WT./PC. OZ. (kg)
44410-1000	Flush		1/2" MPT	
44410-1010	In-Line	3/4" GHT	3/4" GHT	6(0,2)
44410-2000	Flush		1/2" MPT	

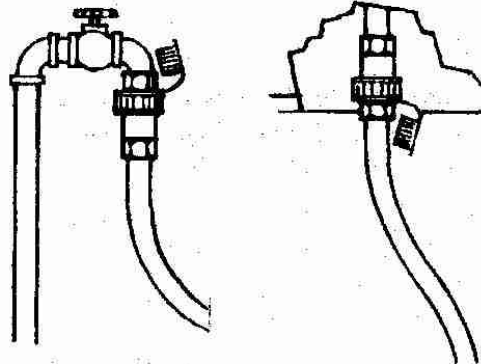
MODELS 44410-1000, 2000

Permanent City Water Regulator/City Water Entry
 Flush mounts permanently in vehicle wall. Easily replaces obsolete city water entries.

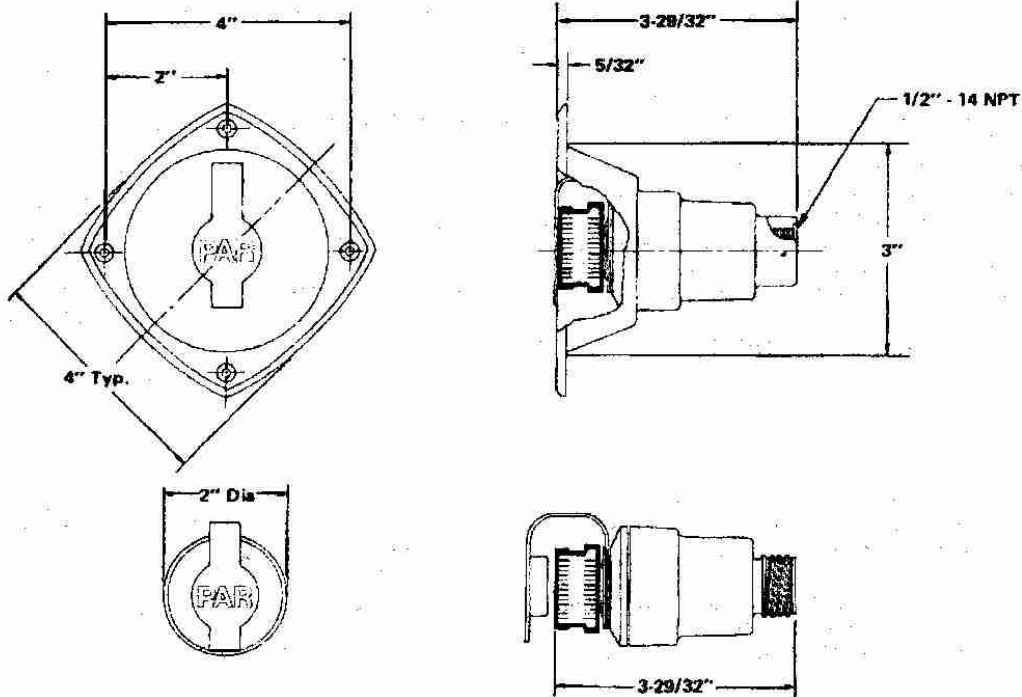


MODEL 44410-1010

City Water Regulator for Temporary or Permanent Mounting
 Simply threads between city water hookup hose and faucet for temporary mounting or threads into existing city water entry of either wall mount or under-chassis types.



DIMENSIONAL DRAWING



ITT Jabsco

A unit of ITT Fluid Technology Corporation

U.S.A.
 ITT Jabsco
 1485 Dale Way, P.O. Box 2158
 Mesa, CA 92628-2158
 (714) 545-8251

UNITED KINGDOM
 ITT Jabsco
 Bingley Road, Hoddesdon
 Hertfordshire EN11 0BU
 Tel: +44 (0) 1992 450145

CANADA
 ITT Fluid Products
 55 Royal Road
 Guelph, Ontario N1H 1T1
 Tel: (519) 821-1900

JAPAN
 NHK Jabsco Company Ltd.
 3-21-10, Shin-Yokohama
 Kohoku-Ku, Yokohama, 221
 Tel: 045-4758906

GERMANY
 MINTEC GmbH
 Postfach 1783/Oststrasse 28
 D-22807 Norderstedt
 Tel: +49-40-53 53 73 -0

THE PRODUCTS DESCRIBED HEREIN ARE SUBJECT TO THE JABSCO ONE YEAR LIMITED WARRANTY, WHICH IS AVAILABLE FOR YOUR INSPECTION UPON REQUEST.